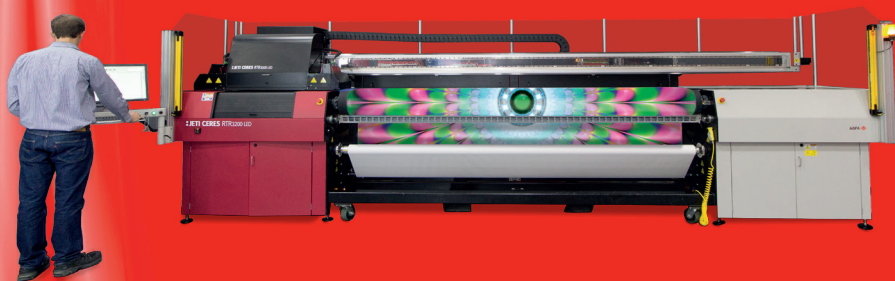




Jeti Ceres RTR3200 LED

Resilient, swift and precise, Jeti Ceres is a roll-to-roll, 3.2 m six-color + white and/or primer UV LED inkjet printer that offers surpassing print quality and output. Ceres stands up to the challenge, for high productivity, minimal maintenance, stunning images and low ink consumption.



UV LED

AGFA 

STAY AHEAD. WITH AGFA GRAPHICS.



Everything you need in roll-to-roll printing

As a dedicated 'workhorse' of roll-to-roll printing and the big sister of Anapurna, Jeti Ceres' speed has been doubled – for Agfa Graphics' signature high-quality results in half the time. Boost your print capacity, lower your costs and wow audiences all at the same time.



Outdoor communication – self-adhesive vinyl

Unsurpassed productivity and robustness

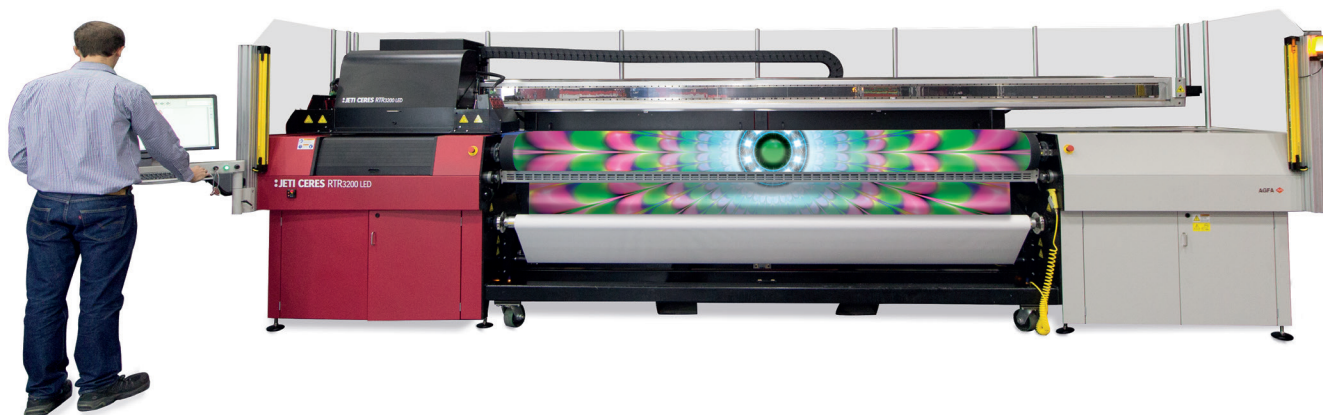
Jeti Ceres is an exclusively roll-to-roll printing solution that combines the extreme robustness of the line with the superior 24/7 throughput demanded by cutting-edge print facilities.

The robust printer is ideal for mid- to high-end roll media printing, powered by Asanti workflow technology and compatible with PrintSphere. Perfectly adapted to industry-leading Agfa UV inks, Ceres features low ink consumption, for faster printing, fewer passes and rich results.

The 'workhorse' of roll-to-roll printing

Nothing beats roll-to-roll printing for productivity, and the Jeti Ceres delivers superb results, time after time, with minimal maintenance and downtime. If you're looking for the true industrial 'workhorse' of roll-to-roll printing, Ceres is the solution for you.

Equipped with 6 UV LED-cured colors plus white and primer as options, this rugged printer easily tackles the toughest jobs, providing the highest image quality on the market on a wide variety of flexible substrates suitable for indoor and outdoor use. The advantages of Jeti Ceres' UV LED lamps and Agfa Graphics' superior inks are numerous, offering significant time, ink and energy cost savings.



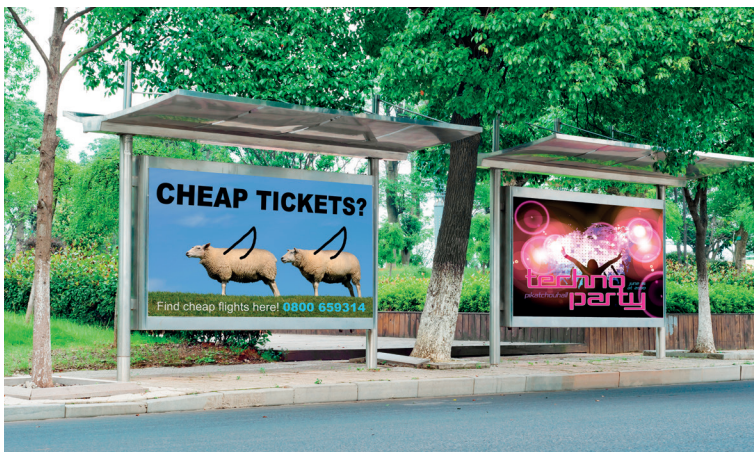
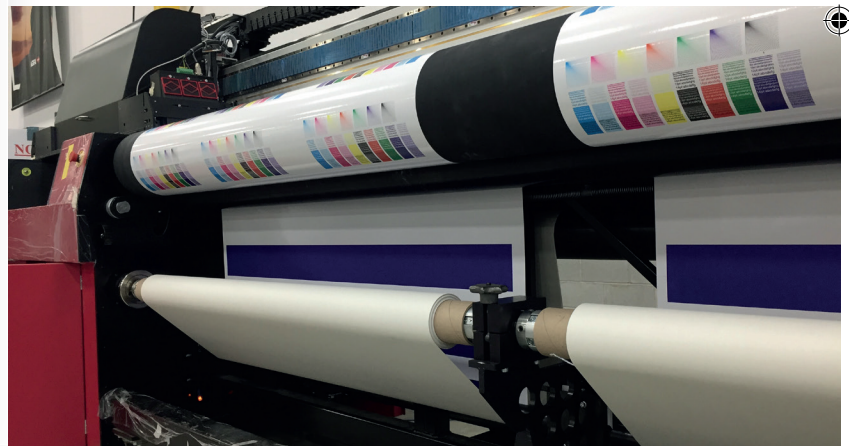
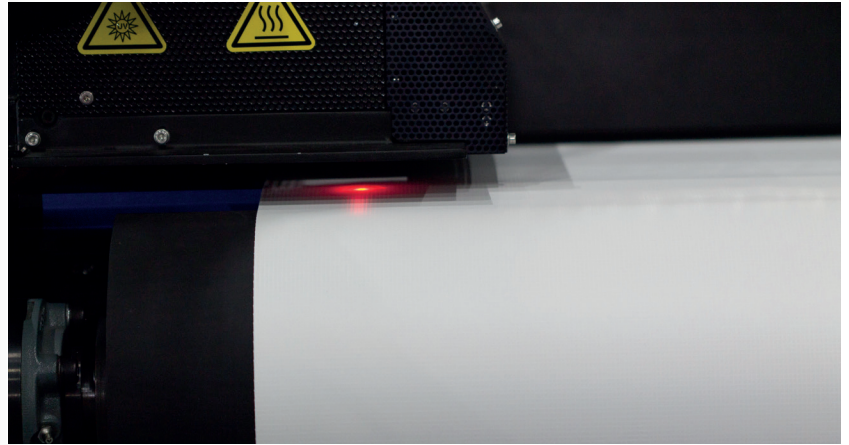


BUSINESS BENEFITS OF UV LED

On the fence about making the switch to UV LED technology? Jeti Ceres comes with ultra-bright UV LED lamps for benefits that will revolutionize your printing business:

- **Print on a diverse array of media** by avoiding heat output during the curing process – no wrinkles, no warping and stable calibration in both directions.
- **Maximize productivity** by doing away with warm-up time and shutter delay.
- **Cut costs and downtime** by benefiting from LEDs' 10,000 hour lifespans and consistent output.
- **Economize and 'ecologize'** with the low power consumption of LEDs.
- **Go green** by eliminating the need for specialized disposal of mercury-containing lamps. Even more, LEDs produce no ozone gas.

Despite higher overhead costs than mercury lamps, **LED lamps lead to numerous benefits over time that, when added up, bring you economy, efficiency, eco-friendliness and flexibility.**



Outdoor communication - vinyl/backlit



Outdoor communication – backlit



Impressive features.

DUAL-SIDED PRINTING WITH INTEGRATED CAMERA SYSTEM.

Do you want to amplify the impact of your backlit or block-out print applications? Jeti Ceres is capable of rapid dual-sided printing, enabling you to maximize the potential of the substrate to display the highest possible image quality. An optional integrated camera system helps to easily find the starting point for printing ensuring an optimal registration.

DUAL-ROLL PRINTING.

Regardless of media type, the Jeti Ceres enables dual-roll printing of media up to 60 inches (152.4 cm) wide for even greater flexibility and output. Combined with its unparalleled print speed, this printer offers the perfect combination of benefits to any high-throughput printing initiative.

LINER-FREE PRINTING ON MESH.

Save costs and broaden the horizon of your printing applications with Jeti Ceres' ability to print on mesh without requiring a liner.

SKIP WHITE.

In order to print as efficiently as possible, the Jeti Ceres automatically skips white areas when printing. This feature is available in both slow and fast scan direction.

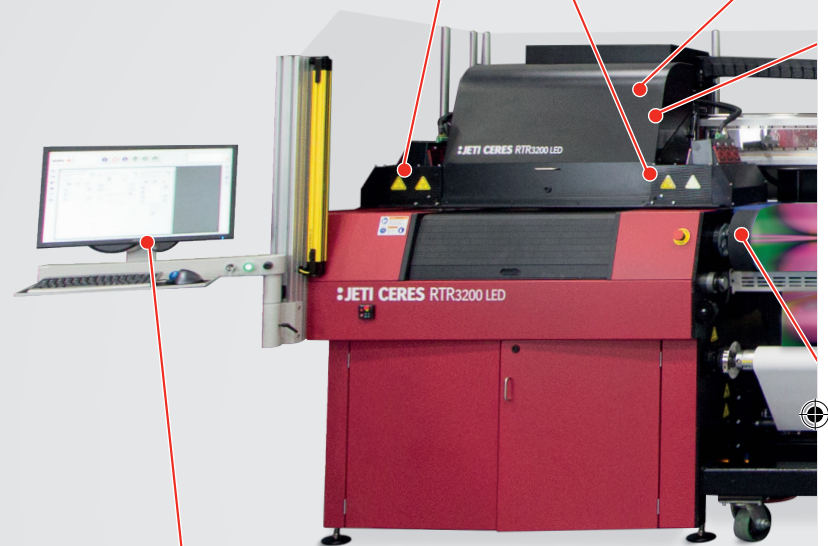
STAY IN THE FLOW WITH THE JETI CERES' EASE-OF-USE.

Keep everything moving forward with minimal downtime by benefiting from Jeti Ceres' accessible, sturdy, low-maintenance build. It's a breeze to service print heads, filters, lamps and ink levels with the printer's easily-accessed print shuttle, and temperature-controlled print heads deter the formation of ink line clogs and blockages.

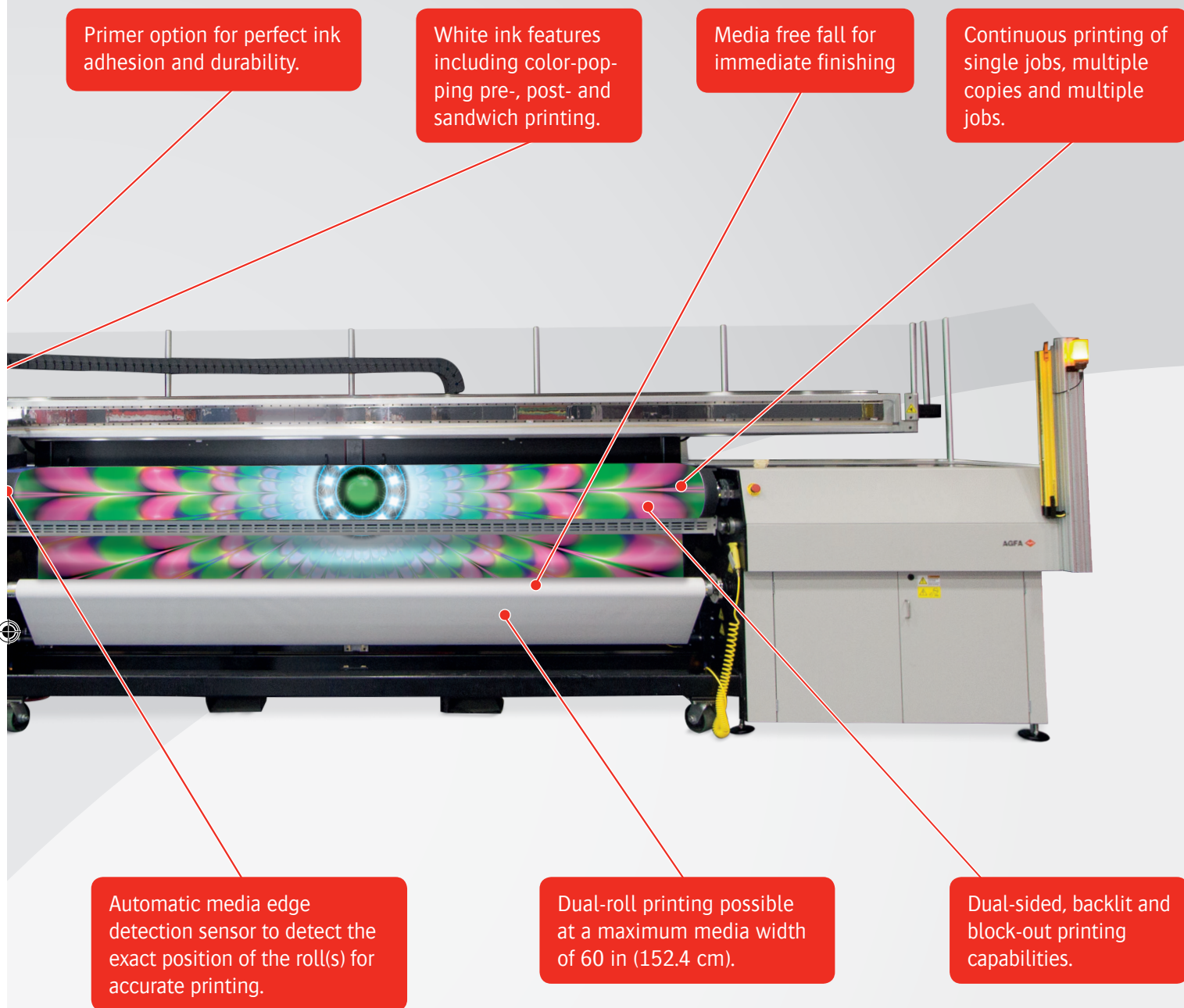
WORLD-CLASS SUPPORT, ANYWHERE YOU NEED IT.

Have a question or run into an issue? Agfa Graphics technicians are experienced, accessible and available when you need them, for prompt resolution of any problem or question. You can even access your Jeti Ceres remotely, for even greater flexibility in managing jobs and solving problems.

LED technology for less down-time, lower costs and compatibility with heat-sensitive media.



Advanced GUI design. The Agfa Graphics Jeti GUI system provides the ultimate functionality: cropping, rotating, auto-nesting, scaling, stepping, saving job parameters for reprints and more – all without needing to RIP the file again.



Multi-layer printing

By assigning different parts of its print heads to different or identical images, Ceres brings images to life with rapid multi-layer printing in different modes

- Pre-white: white printed underneath color
- Post-white: white printed over color
- Sandwich white: color-white-color
- High-density color: double density color printing, ideal for backlit substrates





Vivid colors, high performance

Agfa Graphics knows ink

Our DNA-deep expertise in chemistry and physics makes our scientists unbeatable when it comes to the development of world-class inks. ROI calculations for inkjet printers show that ink – not the investment in the print engine – makes up the largest portion of the cost. Agfa-made inks feature the finest precision dispersion and the smallest dots, for rich depth and color density with no redundant droplets – minimizing ink costs. Highly pigmented with superior gamut, these inks give you the benefits of spectacular images and low ink consumption, courtesy of Agfa Graphics' thin ink technology and the Jeti Ceres' ink and color management capabilities.

Cutting-edge white ink management

Agfa Graphics' white ink enhances the opacity of printed materials, boosts color contrast and intensifies text readability. Add new dimensions and vivacity to backlit substrates and impress audiences with arresting, multifaceted color and clarity with the perfect white background made possible by Agfa Graphics ink, which can be printed in multiple modes on diverse roll media. The white ink used by the Jeti Ceres engine is extremely opaque and constantly circulated by the printer along the entire ink line, preventing blockages or clogging.

Primer option for premier results

Printing on unusual substrates? Need extra durability? Enhance your results without losing any time with Jeti Ceres' primer option. The engine pre-prints a fine layer of primer automatically before depositing ink, preparing the surface of the substrate to receive ink by giving it ideal surface tension with minimal impact on cost per square meter printed. Primer can be printed in 'fill' format (covering the entire area) or 'mask' format (covering only printed areas).

The Jeti Ceres is driven by Agfa Graphics' wide-format workflow software Asanti, which controls the entire printing process from prepress to production and finishing. As such, it simplifies, optimizes and automates as many steps as possible, offering you a high-performance solution for increased productivity



In-store communication – textile



Outdoor communication – mesh



Driven by Asanti workflow

The Jeti Ceres is driven by Agfa Graphics' wide-format workflow software Asanti, which controls the entire printing process from prepress to production and finishing. As such, it simplifies, optimizes and automates as many steps as possible, offering you a high-performance solution for increased productivity

Accuracy and consistency

The huge variety of file types to be handled significantly slows down the processing of print jobs and often leads to errors. These difficulties are overcome with the Asanti software. As the print settings for different media are stored in a database, Asanti is able to quickly call up the appropriate specifications and apply them. Rendering, image and color quality are automated, and Asanti checks files prior to printing, ensuring layers and transparency have been handled correctly, while flagging potential issues. By dramatically simplifying the task of the operator, reducing idle time and efficiently tackling issues prior to printing, turnaround is reduced and productivity is increased.

StoreFront

StoreFront, a comprehensive web-to-print service, is designed to handle incoming orders from the internet. Automated payment processing and error-free print preparation ensure new jobs are ready for printing in no time and with a minimum of operator intervention.

Intuitive GUI

The Asanti GUI works with improved visualization of the job layout and positioning: operators can see exactly what they are printing. The GUI offers access to key print parameters to make sure any last-minute changes are quick and easy to apply. Job preparation takes place independently from the Ceres operation due to the client-server infrastructure. This complements the autonomy of the machine beautifully; ensuring operators are not tied to the printer when other tasks demand their attention.



StoreFront web-to-print software

Integrable with PrintSphere

As a highly-advanced printer powered by Asanti, the Jeti Ceres integrates perfectly with PrintSphere, Agfa Graphics' cloud-based service for production automation, easy file sharing and safe data storage. This integrable cloud service offers a standardized way for print service providers to automate their workflows and facilitate data exchange with customers, colleagues, freelancers, other departments and other Agfa solutions.



Outdoor communication – vinyl & self-adhesive vinyl

Mesh printing



Jeti Ceres RTR3200 LED

Media & Printing Specifications

Flexible Media

Max-Min print width	Single roll = 3.20 m (126.0") - 60.96 cm (24") Dual roll = 1.52 m (60") - 60.96 cm (24")
Max-Min print height	Full roll length - na
Max-Min roll width	Single roll = 3.26 m (128.5") - 60.96 cm (24") Dual roll = 1.56 m (61.5") - 60.96 cm (24")
Maximum length	>100 m length. Also depends on the thickness and total roll weight
Max-Min media thickness	Max. 2.0 mm (0.08") - Min. 0.2 mm (1/64") for single and dual roll
Maximum weight	Single roll = 200 kg (441 lb) Dual roll = 180 kg (400 lb), 2 rolls of each 90 kg (200 lb)
Maximum roll outside diameter	360 mm (14.2") for single and dual roll
Roll mounting	Pneumatic shafts for 7,62cm - 3" (standard) and 15,24 cm - 6" (with adapters) for single and dual roll
Media skew	Max. 2 mm on 10 m printing, for single and dual roll
Borderless printing flexible media	Single roll = Up to 3.2 m (126")
Media transportation	Pre-heater, dancer bars and print plate suction for roll-to-roll & free-fall

Productivity

Express mode	186 m ² /h (2,002 ft ² /hr)
Production mode	94 m ² /h (1,012 ft ² /hr)
Standard mode	62 m ² /h (667 ft ² /hr)
High-quality mode	36 m ² /h (387 ft ² /hr)
High-definition mode	22 m ² /hr (237 ft ² /hr)

Media

Media types	Reinforced vinyl, pressure-sensitive vinyl, clear materials, block-out banner, canvas, mesh, fabrics (non-stretchy), paper, backlights, and more
-------------	--------------------------------------------------------------------------------------------------------------------------------------------------

Applications

Color only, pre-white, post-white, sandwich white, primer (concurrent)

Print Heads & Inks

Print heads	Piezoelectric Ricoh MH5420
Ink	CMYKLCm + white and primer (white and primer are factory-installed options)
Ink system maintenance	Pulse when printing & auto prime when idle (configurable)

Image & Text Quality

Image quality	Resolution up to 920 x 1200 dpi in High Definition
Text quality	4 point legible text, Sans Serif.

Engine Dimensions & Weight

Printer dimensions & Weight (H x W x L)	1.99 m x 1.78 m x 6.48 m (78.5 in x 70 in x 255 in) 2177 kg (4800 lbs)
Crate dimensions & Weight(H x W x L)	2.54 m x 2.04 m x 6.81 m (100 in x 80.25 in x 268 in) 3175 kg (7000 lbs)

Electricity & Compressed Air

Electricity	400Y/230V, 3-phase 50/60 Hz 25 KVA (35A)
Compressed air	5 cfm continuous air at 100-150 psi (8.3 m ³ /hr at 6.9-10.3 bar)

System Integration RIP / Workflow software

Asanti, PrintSphere, third-party rips

© Copyright 2017 by Agfa Graphics NV. All rights reserved. Agfa and the Agfa rhombus are trademarks of Agfa-Gevaert NV Belgium or its affiliates. Jeti is a trademark of Agfa Graphics NV, Belgium or its affiliates. All other brand and product names may be service marks or trademarks of their respective owners. All product specifications are subject to change without prior notice.

EN20170124

